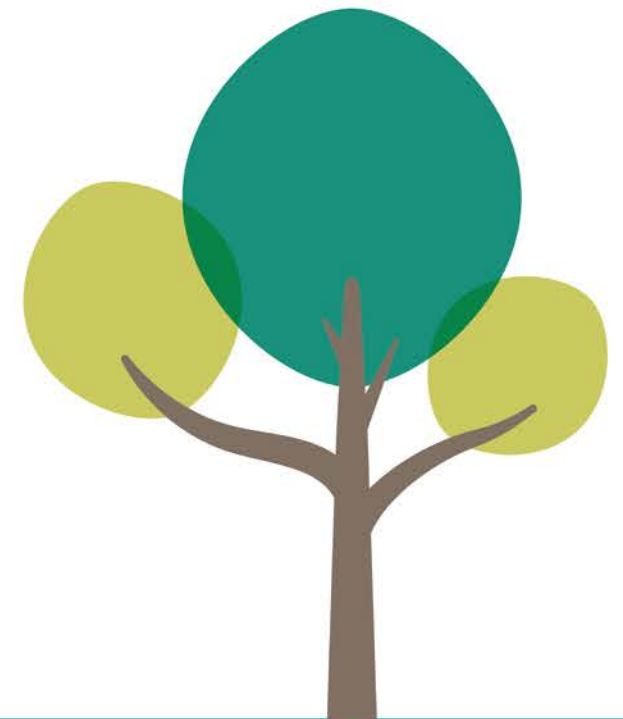


BIG PLANS FOR A GREAT PLACE

...FOR THE PEOPLE OF SANDWELL

THE SANDWELL PLAN
2020-2025





BIG PLANS FOR A GREAT PLACE

...FOR THE PEOPLE OF SANDWELL

THE SANDWELL PLAN
2020 – 2025



A new Corporate Plan for the Council...

- ❖ To set out how we will deliver our part of Vision 2030 for the next five years
- ❖ To be viewed in tandem with the Inclusive Economy Deal
- ❖ Not designed to capture everything the council does
- ❖ Six strategic outcomes delivered by a one team, one Council approach
- ❖ Detailed action plans to deliver it will sit below it



Six Strategic outcomes...

- ❖ The best start in life for children and young people
- ❖ People live well and age well
- ❖ Strong, resilient communities
- ❖ Quality homes in thriving neighbourhoods
- ❖ A strong and inclusive economy
- ❖ A connected and accessible Sandwell

Plus...

- ❖ One Team, One Council



❖ **The best start in life for children and young people**

- Recognising the importance of the first 1000 days for setting the foundations of a thriving life
- Improving and joining up all early years services to address these priorities – Early Years Transformation
- Ensuring children are ready for school
- Improving targeted support for vulnerable children experiencing adverse childhood experiences and being a good corporate parent.



❖ **People live well and age well**

- Supporting healthier lives by ensuring people are engaged in their community and more active
- Supporting choice and independence with the right help
- Bring together health and social care staff to join up care and support.



❖ Strong, resilient communities

- Ambitious plans to regenerate our towns as centres of community life
- Stronger Towns Fund bid
- Opening of new hub for local services in Rowley Regis and continue to develop for other centres
- Enhancing our green and open space
- Ambitious target to become carbon neutral by 2041
- Green our housing stock with commitments to high energy performance standards – new and existing homes
- Steps to foster resilience and a safer environment, working with our partners



❖ **Quality homes in thriving neighbourhoods**

- Extensive building programme of both council and private sector homes
- New communities to be created in Friar Park and Grove Lane to the highest quality with all local amenities
- 90 new extra care apartments in Rowley Regis
- Improve the quality of existing accommodation
- Supporting people and families most at risk from homelessness



❖ **A strong and inclusive economy**

- Creating an inclusive economy where no one is left behind
- Lead partners to build our community wealth in Sandwell
- Aquatic centre as a catalyst for economic, wellbeing and cultural development
- Make the most of Sandwell Valley and our canal network
- Maximise the regenerative effect of Midland Met Hospital
- Major new education facilities for Sandwell
- High quality support to local businesses to thrive and prosper
- Programme of independent advice and guidance into employment for young people
- Council will offer quality work placements and increase take up of apprenticeships



❖ **A connected and accessible Sandwell**

- Maximise the strength of our strategic location at the centre of the WM region
- Work with the CA to ensure residents can access opportunities across the region
- Delivery Birchley Island transport scheme and Wednesbury-Brierley Hill Metro corridor
- Enabling people to get around in a healthy and sustainable way
- Making the most of our waterways.





BIG PLANS FOR A GREAT PLACE

THE SANDWELL PLAN

❖ One Team, One Council

Great Services

Great place to work

Making the most of our resources

Listening, learning and accountable



Forward to 2030...

- ❖ We're entering an exciting period of change
- ❖ Aligning the shape of the council to deliver this plan
- ❖ One team, one council approach to developing the delivery plans
- ❖ We will be engaging all members and staff in this process
- ❖ Join us in developing and delivering this exciting agenda for Sandwell



Feedback from engagement

- 36 members attended two engagement events
- 130 comments generated
- 4 suggested additions/amendments to the Plan



Suggested additions/amendments

- Performance of Children's Services, working with the Children's Trust
- Climate Change – target not challenging enough!
- Homes for life
- Young people transitioning to young adults

